

Kentucky Student Success Summit

Kentucky Council on Postsecondary Education

Making Excellence Inclusive Pervasively

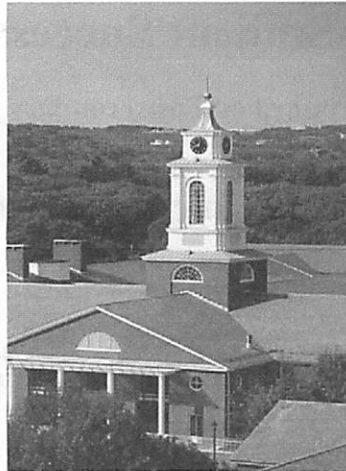


Alma R. Clayton-Pedersen
Senior Scholar, AAC&U
CEO, Emeritus Consulting Group, LLC

This is America's Moment...

**Making Excellence Inclusive is
Absolutely Fundamental to Our
Shared Future**

Mission

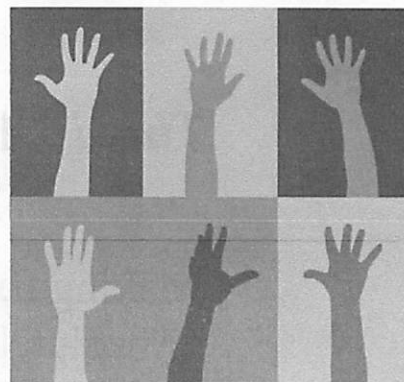


Vision

Values

Re-envisioning Diversity

Diversity: Individual differences (e.g., personality, learning styles, and life experiences) and group/social differences (e.g., race/ethnicity, gender, country of origin, and ability as well as cultural, political, religious, or other affiliations) that can be engaged in the service of learning



Re-envisioning Inclusion

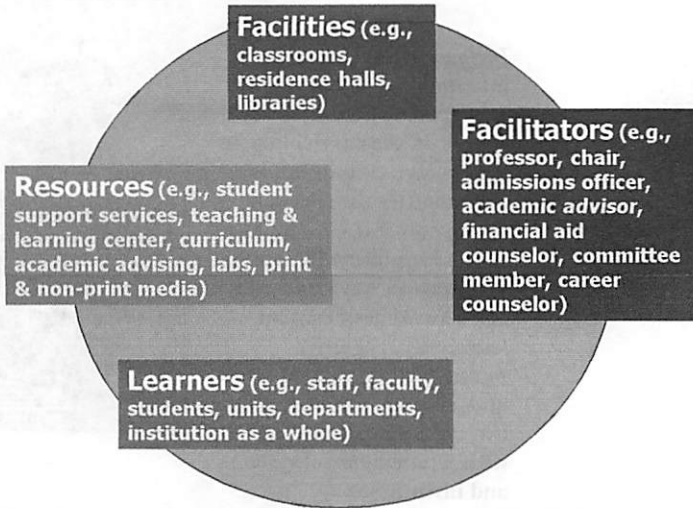
Inclusion: The active, intentional, and ongoing engagement with diversity—in people, in the curriculum, in the co-curriculum, and in communities (intellectual, social, cultural, geographical) with which individuals might connect—in ways that increase one's awareness, content knowledge, cognitive sophistication, and empathic understanding of the complex ways individuals interact within [and change] systems and institutions.



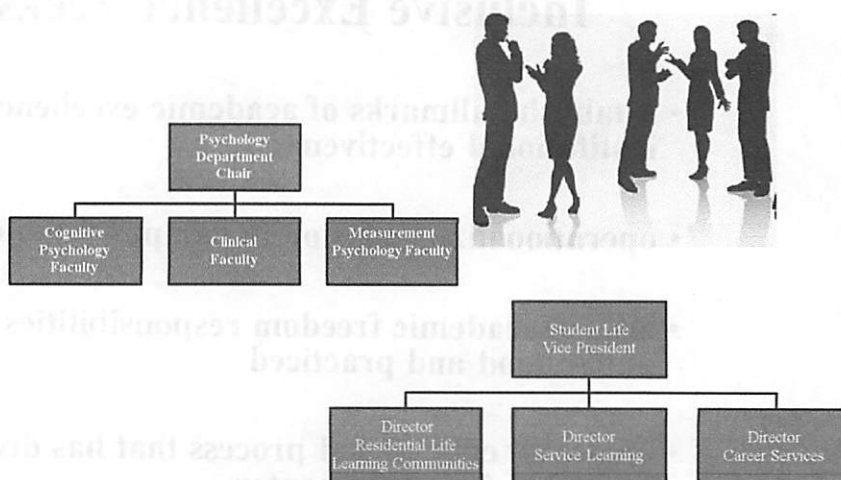
Inclusive Excellence Seeks to:

- establish hallmarks of academic excellence and institutional effectiveness
- operationalize inclusion in campus functioning
- ensure academic freedom responsibilities are understood and practiced
- create an educational process that has diversity and inclusion at the center

The Higher Education Learning Environment Today: Disparate Elements



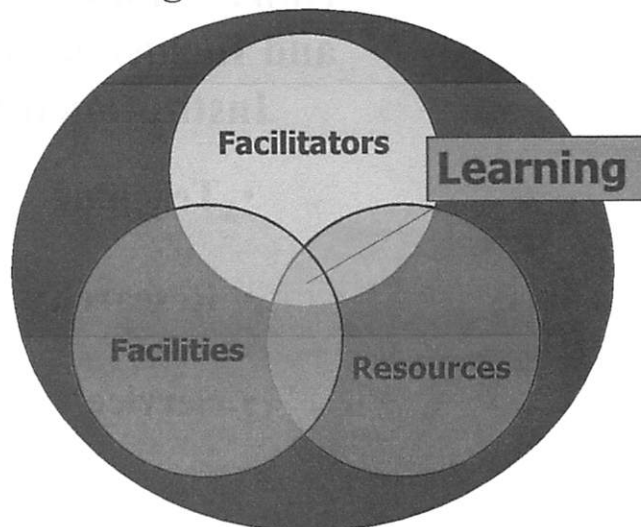
The Higher Education Learning Environment Today



The Intentional Institution

- **Creates synergy at the points where various elements of learning intersect (through communication, coordination, and collaboration)**
- **Makes the most of the uniqueness of each learner—as an individual and as a member of multiple identity groups—to enhance key learning outcomes**
- **Uses learning facilitators, facilities, and resources in the service of learning and knowledge development to strengthen our nation’s diverse democracy and quality of life for all**

The Intentional Institution: Making Excellence Inclusive



How? By Focusing on the Essential Learning Outcomes



- Knowledge of Human Cultures and the Natural and Physical World



- Intellectual and Practical Skills
- Individual and Social Responsibilities
- Integrative Learning

How? Link Diversity, Equity, and Inclusion Efforts to Core Institutional Functions

- Teaching
- Research
- Service