

KENTUCKY FUTURE SKILLS REPORT

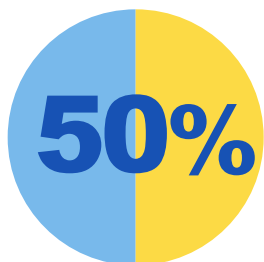
HISTORIC SUPPLY (2011-15) - CURRENT EMPLOYMENT OUTCOMES - FUTURE DEMAND (2017-21)



Over the last 5 years, there have been 460,566 people earning 623,070 credentials.



Career and Technical Education credentials have more than doubled over the past 5 years.



Half of STEM majors enter a Key Sector for employment.



Healthcare Practitioners and Technical Occupations are projected to have the most high skilled jobs over the next 5 years.



In the next 5 years, Kentucky is projected to need to fill over 400,000 jobs with an average wage of \$43,952.

REAL DATA to make
REAL DECISIONS at

KCEWS.KY.GOV

KCEWS
KENTUCKY CENTER FOR
EDUCATION & WORKFORCE STATISTICS

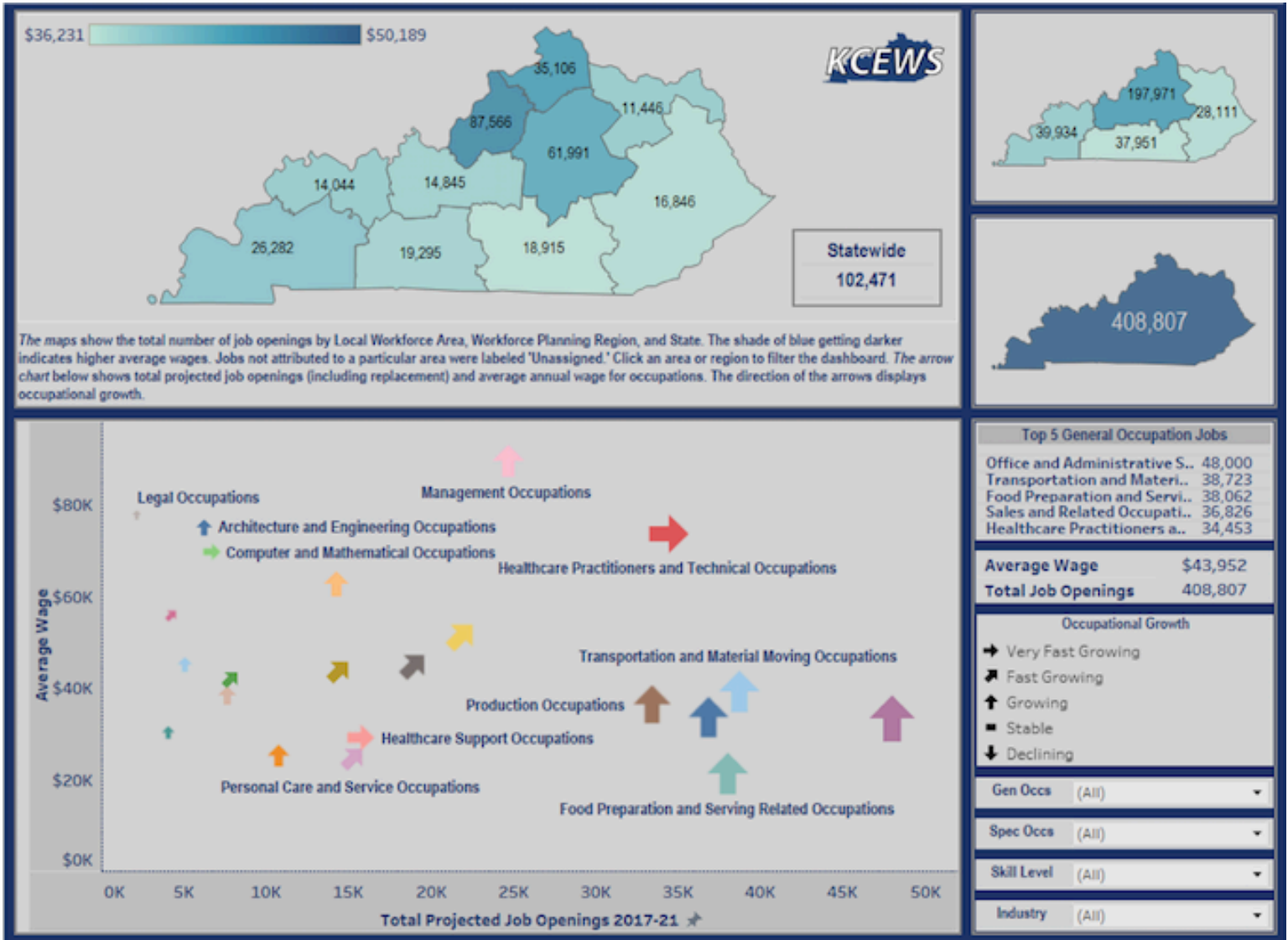
DIRECTIONS TO FUTURE SKILLS REPORT

1. Open an internet browser and enter kcews.ky.gov
2. Go to the middle tab and click on **Explore the Data**
3. On the drop down box click on **Interactive Reports**
4. **Under Content Area** click on **Labor/Workforce** and select **Kentucky Future Skills Report**

The **Kentucky Future Skills Report** is an interactive report that assists policymakers, practitioners and the public when making education and workforce decisions. The **Kentucky Future Skills Report** utilizes two components of education and workforce development in Kentucky: Historic Workforce Supply and Current Employment Outcomes.

The **Kentucky Future Skills Report** is organized into four tabs: Description and Technical Notes, Historic Supply (2011-15), Current Employment Outcomes and Future Demand (2017-21).

- A. **Description and Technical Notes** lists report explanations and has a link to the technical notes. The technical notes are like a frequently asked questions guide for the report. This tab also contains a tool allowing users to pick a desired occupation to see what that occupation's income and 5 year projected demand is by Local Workforce Area.
- B. **Historic Supply (2011-15)** displays the most current Kentucky credential data available from 2011-2015 by total number of people earning a credential and total number of credentials earned. Credentials are high school diplomas or equivalent, certificates, diplomas, associate degrees, bachelor degrees, and graduate degrees. Kentuckians can use an interactive tool to compare credential supply by State, Workforce Planning Region (WPR) and Local Workforce Area (LWA).
- C. **Current Employment Outcomes** analyzes wages and percent employed in Kentucky over time by secondary (high school graduates with and without career and technical education) and postsecondary (degree level and majors) achievement.
- D. **Future Demand (2017-21)** uses a combination of Kentucky Labor Market Information and Bureau of Labor Statistics data to project occupation-level job openings and wages in Kentucky from 2017-2021.



**REAL DATA to make
REAL DECISIONS at**

KCEWS.KY.GOV

KCEWS
KENTUCKY CENTER FOR
EDUCATION & WORKFORCE STATISTICS