

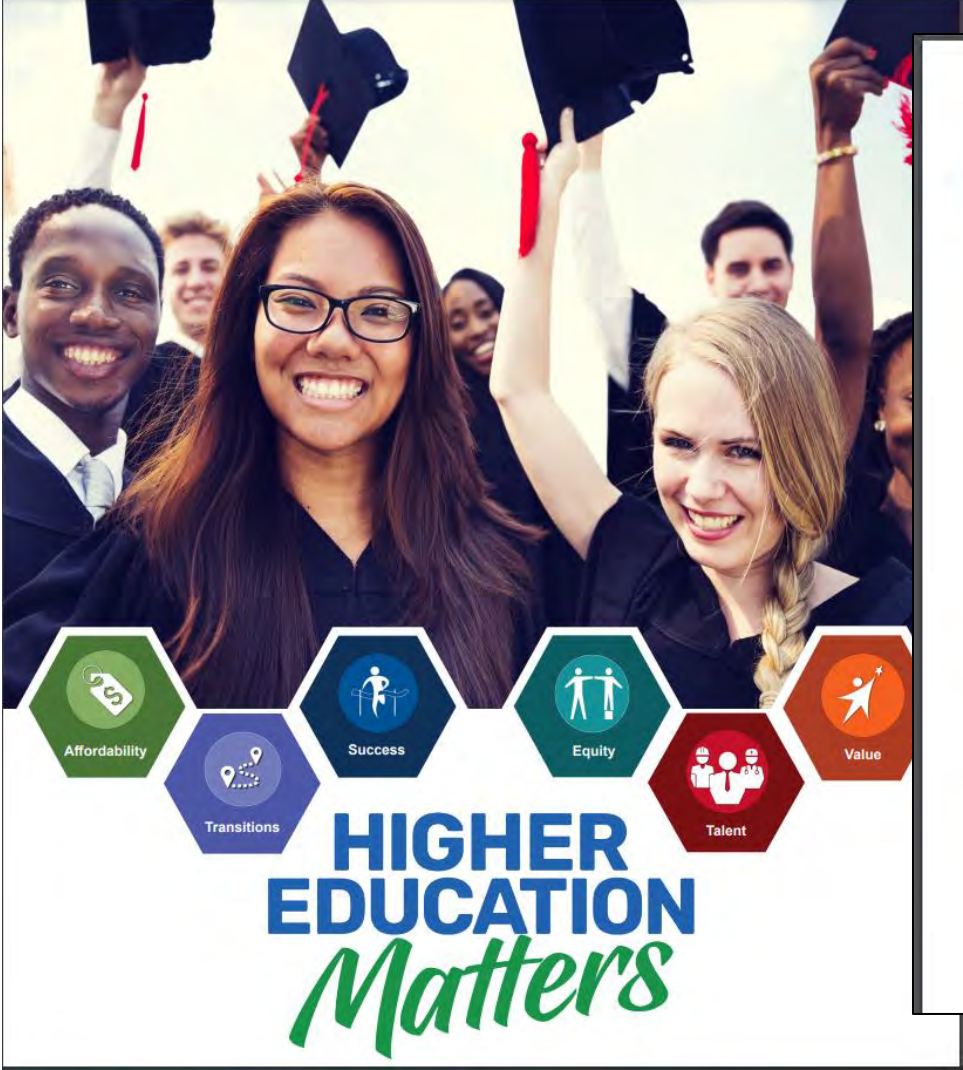
Strengthening Kentucky's Adult Learner Pipeline

Trusteeship Conference, Day 2
September 20th, 2022

Lee Nimocks, Senior Vice President & Chief of Staff
Amanda Johannsen, Associate Director, Adult Learning
Initiatives



Adult Learners in the Strategic Agenda



SUCCESS Objectives, Strategies & KPIs

5. Increase persistence in and timely completion of postsecondary programs.

- 5a. Share, implement and evaluate emerging, promising and proven practices supporting student success and college completion.
- 5b. Identify and promote efforts to ensure “on-time” program completion.
- 5c. Work with campuses and other state and national partners to close opportunity and success gaps for historically underserved students of color and students from low-income backgrounds.
- 5d. Work with education providers to limit barriers to enrollment and completion of other students balancing the competing demands of work, life, family and school.

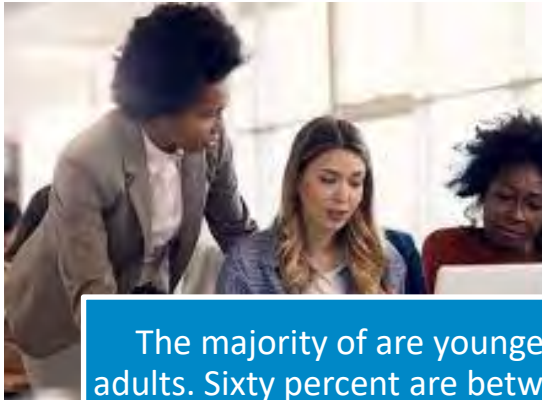
6. Maximize transfer of academic and experiential credit.

- 6a. Work with campuses to reduce barriers that prevent the seamless transfer of credit.
- 6b. Promote transfer opportunities and program pathways.

7. Ensure academic offerings are high-quality, relevant and inclusive.

- 7a. Work with campuses to ensure the essential competencies and outcomes outlined in the Kentucky Graduate Profile are embedded in all academic programs.
- 7b. Work with campuses to ensure academic and co-curricular offerings are equity-focused and inclusive.

Who are Kentucky's Current Adult Learners?



The majority of are younger adults. Sixty percent are between the ages of 25 and 34



The majority (60%) are female.



Underrepresented minority students make up 18% percent of the adult learner population in Kentucky



Adult students are more likely to attend part-time (62%)

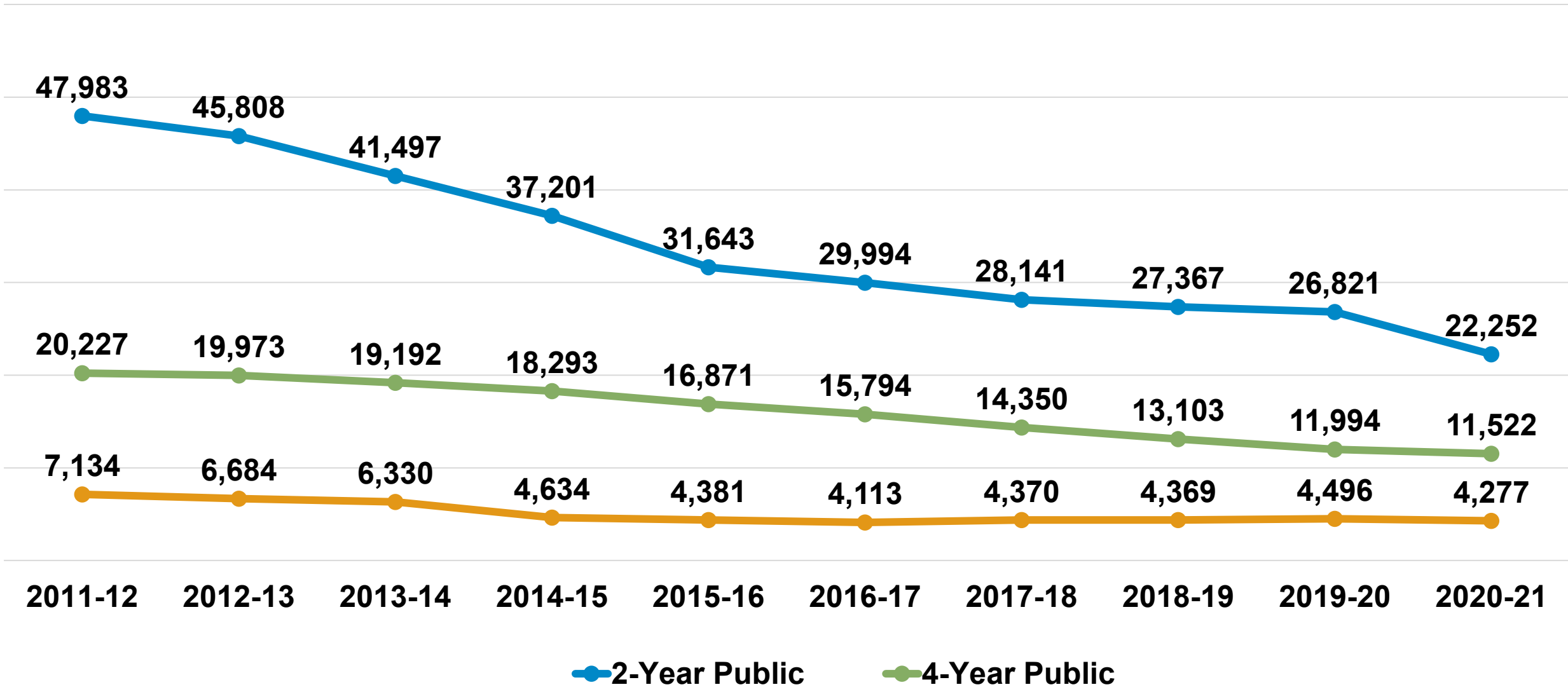


Of those adults who have financial aid records, 45% are from low-income backgrounds and half (49.5%) have dependent children.

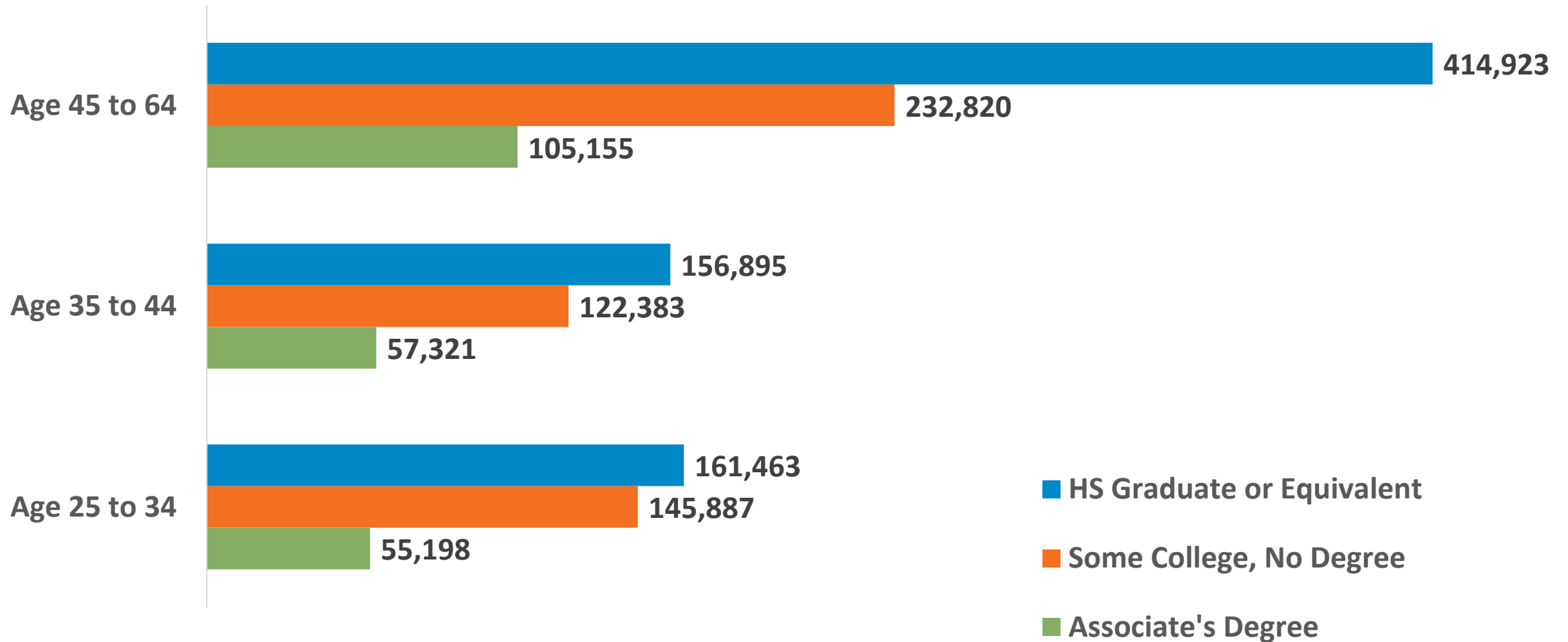


Adults represent 20% of the overall undergraduate student population in Kentucky versus 32% a decade ago

Steady Decline in Enrollment Across Sectors for Adult Learners



Potential Adult Learner Market in KY



A Deeper Dive



- There are approximately **230,000 Kentucky adults** between the ages of 25 and 39 who:
 - Are not currently enrolled in postsecondary education
 - Do not have a degree
 - They are currently in the workforce
 - They are making less than \$35,000 annually, substantially less than the median income in Kentucky.

Responding to the Challenge

Kentucky's Adult Education Attainment Academy (November 2021-August 2022)

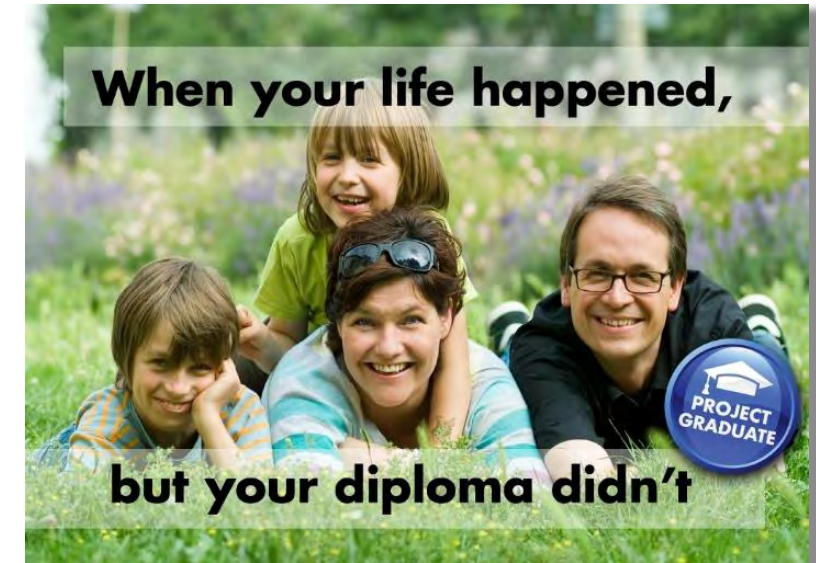
- Develop strategies to engage/reengage Kentucky adults in the workforce through accessible, high quality, high value postsecondary programs.
- Establish a common vision and set of objectives with our state partners to guide this work.
- Build a common understanding of current “assets” in Kentucky supporting adult learners and build on these in our future work.



Framework for Action

- **Accessibility** – *How can we ensure adult residents have the support and resources they need to enroll and succeed?*
- **Institutional Innovation** – *This area addresses both campus organizational structures and academic programs. How can we ensure adults students are able to easily navigate administrative and advising systems, and thrive in the classroom?*
- **Partnerships** – *How can we ensure deeper connections to business and community to strengthen career pathways for adult learners?*

- Launch **statewide information portal** with specific adult-learner information
- Launch the **Innovative Scholarship Program** supporting students from displaced populations resettling in Kentucky
- Partner with a data analytics organization to **more precisely identify prospective students** for the purposes of more targeted information-sharing
- Pursue funding to **re-launch and expand Project Graduate**

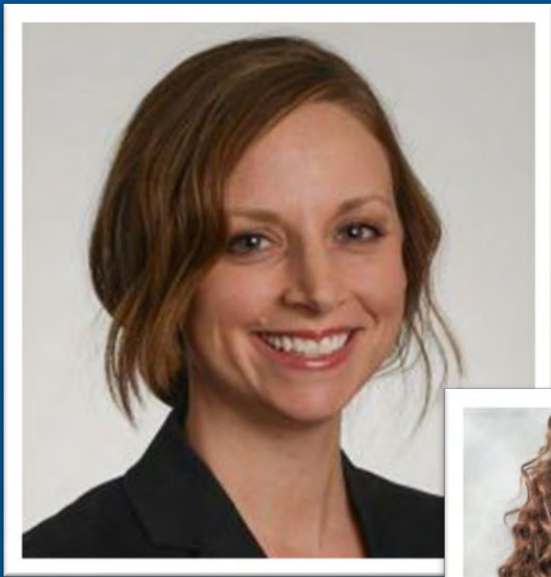


- Convene stakeholders for a community of practice centered on **credit for prior learning** (CPL)
- Identify gaps in **institutional basic needs programs** (work beginning with Lumina-funded grant facilitated by CPE with 8+ campuses)
- Evaluate codifying a statewide approach to credit for prior learning, beginning with **military credit**
- **Evaluate potential metrics** for addition to the Strategic Agenda, specific to adult learners
- Explore including an adult-focused metric in KY's **performance-based funding model**



- Create an **asset map of existing partnerships** that support adult learners and transitions into/out of the workforce and identify next steps for expansion
- Engage community leaders through **Fall 2022 Community Conversations**
- Establish **partnerships with regional healthcare provider** organizations through Healthcare Workforce Collaborative
- Explore **community-based ambassador models** and their sustainability





Amy Danzo, M.Ed.

Director of Testing Services & Adult Learner Programs and Services
Northern Kentucky University



Ebony Muldrow, Ed.D.

Assistant Provost for Adult Learning
University of Louisville



Brian R. Selmeski, Ph.D.

Associate Vice President for Academic Success
Kentucky Community & Technical College System

Strengthening Kentucky's Adult Learner Pipeline

Trusteeship Conference, Day 2
September 20th, 2022

Lee Nimocks, Senior Vice President & Chief of Staff
Amanda Johannsen, Associate Director, Adult Learning
Initiatives

